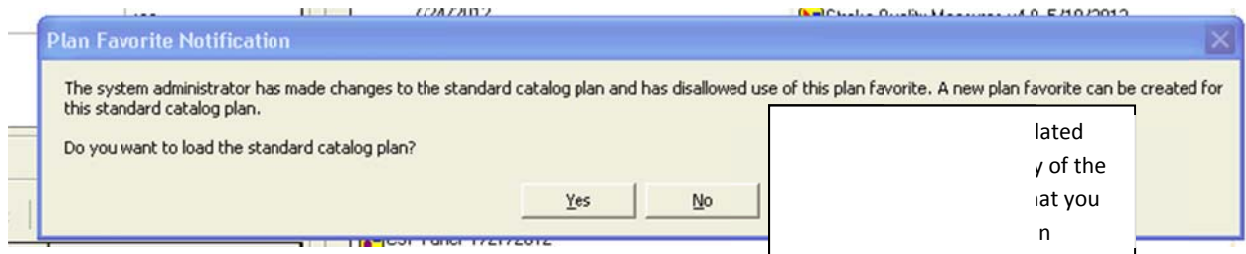


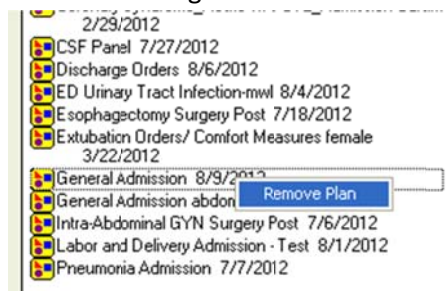
TO: EHR Users

FROM: CSM Leadership and EHR Physician Design Consultants

- We have received many requests to make changes to our orders and Power Plans. Our great activation support team is working hard to make the approved changes in response to your requests.
- Any changes reviewed and determined to be related to patient safety were done immediately.
- We are prioritizing other order and Power Plan change requests that come in.
- To support safe and optimized use of Power Plans the updated Power Plan will deactivate your matching saved favorite.
- Updates will be done on a regular schedule, our next release of updates is scheduled for 0100 on Sunday, 8/12. Here is a link that will be active as of 8/12/12 to the list of Power Plans that are updated in this release: <http://contribute.columbia-stmarys.org/EHR/index.html>
- If you have saved that same Power Plan in your favorite folder it will be deactivated.
 - The next time you select that Power Plan you will receive the following message:



- If you select NO you will not have a Power Plan put into the patient's chart and need to go back out and search for the new Power Plan from the general supply of Power Plans
- You should then modify this new plan as / if needed and save to your favorites WITH A NEW NAME.
- You can then right click on the old favorites plan and select REMOVE to get it out of your favorites folder:



Due to the high volume of changes that will be happening until the end of August you do not have to save favorites and may want to use the general selection list. It is an individual preference on continuing to save favorites or working off the general list until we are through this phase of changes related to activation.

We will communicate an ALL CLEAR when we feel the volume of changes is at an acceptable level to start saving favorites again.

We will communicate our Power Plan change management process starting in September.